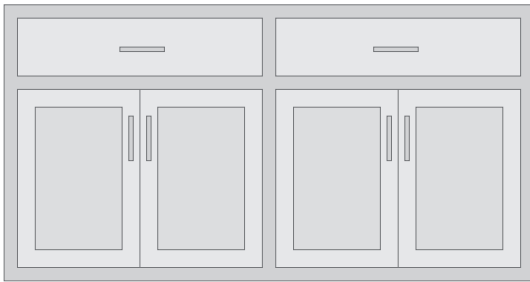


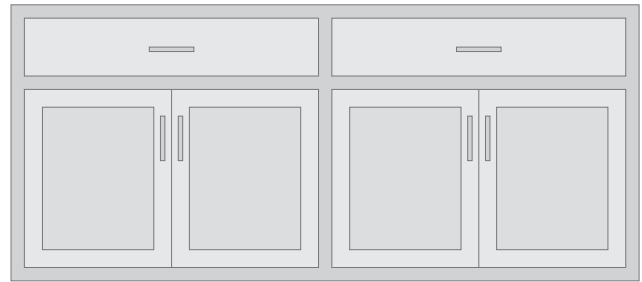
Our SYO inset buffets and credenzas features door and drawer faces slightly recessed into the case frame. Then you can choose drawer/door configuration you prefer, top style, type of drawer and door fronts, style of legs, and finally the style of hardware you want.



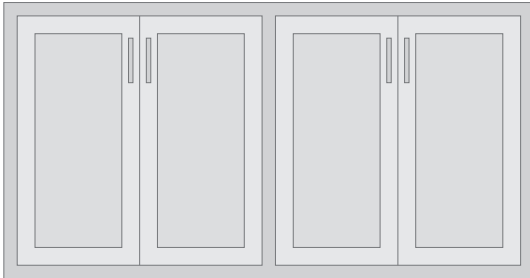
STEP 1 | CHOOSE INSET BUFFET OR CREDENZA



**Inset Buffet, 60"**  
59½" w x 18" d x 31" h\* ESG29C



**Inset Buffet, 72"**  
70½" w x 18" d x 31" h\* ESG29D



**Inset Credenza, 60"**  
59½" w x 15" d x 31" h\* ESH23C



**Inset Credenza, 72"**  
70½" w x 15" d x 31" h\* ESH23D

\*Size does not include top and feet.

STEP 2 | CHOOSE TOP



**Top with Trim**  
EST-CH  
Adds 1" to overall height.  
Adds 2" to overall width.



**Top with Large Bevel**  
EST-LB  
Adds 1" to overall height.  
Adds 1½" to overall width.



**Top with 1/8" Overhang**  
EST-MO  
Adds 1" to overall height.  
Adds ¼" to overall width.

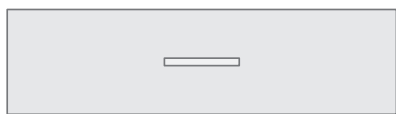


**Top with ¾" Overhang**  
EST-TR  
Adds 1" to overall height.  
Adds 1½" to overall width.

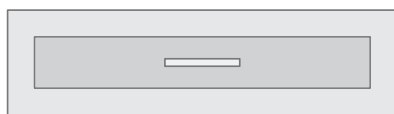


**Top with Reverse Bevel**  
EST-RB  
Adds 1" to overall height.  
Adds 2" to overall width.

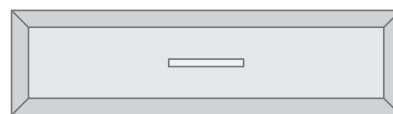
### STEP 3 CHOOSE INSET DRAWER FRONT



**Flat Slab**  
ESS-FS



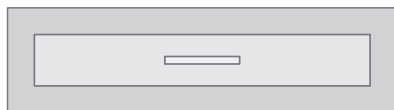
**Flat Panel**  
ESS-FP



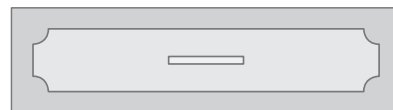
**Raised Panel**  
ESS-RP



**Beaded Edge**  
ESS-BE

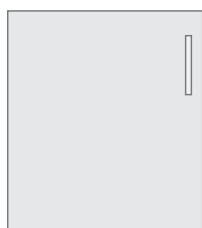


**Step Panel**  
ESS-SP

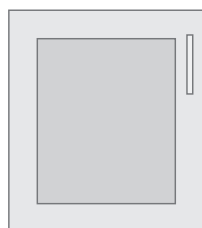


**Scalloped Panel**  
ESS-SC

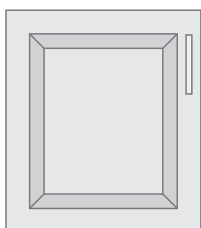
### STEP 4 CHOOSE INSET DOOR FRONT



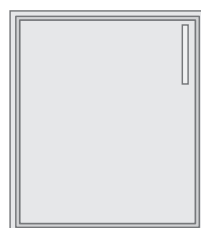
**Flat Slab Door Front**  
ESR-FS



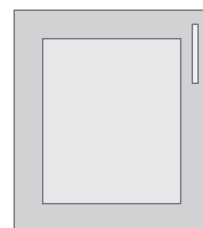
**Flat Panel Door Front**  
ESR-FP  
Glass Options Available



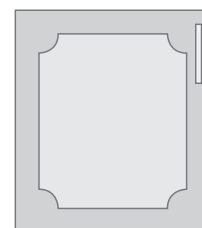
**Raised Panel Door Front**  
ESR-RP



**Beaded Edge Door Front**  
ESR-BE

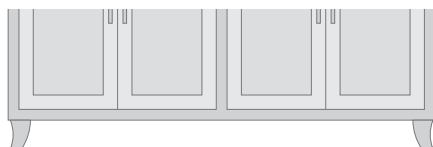


**Step Panel Door Front**  
ESR-SP

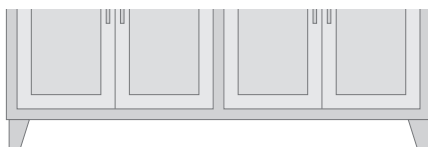


**Scalloped Panel Door Front**  
ESR-SC

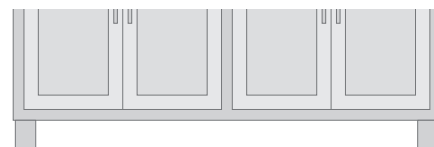
### STEP 5 CHOOSE LEG/BASE



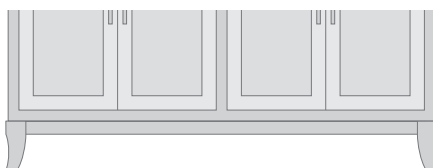
**4" Curved Leg**  
ESL-CH, Adds 4" to overall height.



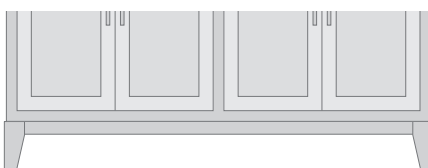
**4" Tapered Leg**  
ESL-TR, Adds 4" to overall height.



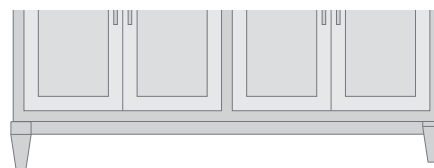
**4" Square Leg**  
ESL-MO, Adds 4" to overall height.



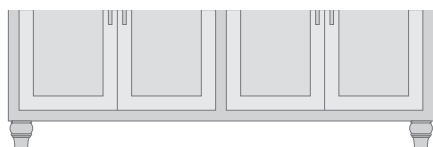
**7" Curved Leg**  
ESL-CH-7, Adds 7" to overall height.



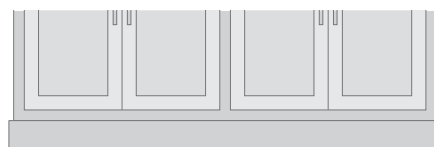
**7" Tapered Leg**  
ESL-TR-7, Adds 7" to overall height.



**7" Round Tapered Leg**  
ESL-RD-7, Adds 7" to overall height.



**4" Turned Leg**  
ESL-TU, Adds 4" to overall height.



**4" Plinth Base**  
ESL-PL, Adds 4" to overall height.

### STEP 6 CHOOSE HARDWARE

Level A hardware is standard. See the Simply Amish Features and Options book for complete selection.

Door and drawer faces and their edge are exposed. Choose the style, size, top style, drawer front, leg, and hardware.



STEP 1 CHOOSE FULL OVERLAY BUFFET



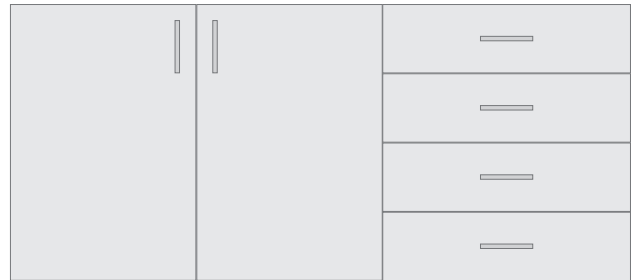
Full Overlay Center Buffet, 60"  
59½" w x 18" d x 31" h\* ESFUL-G29C



Full Overlay Center Buffet, 70"  
70½" w x 18" d x 31" h\* ESFUL-G29D



Full Overlay Offset Buffet, 60"  
59½" w x 15" d x 31" h\* ESFUL-G30C



Full Overlay Offset Buffet, 70"  
70½" w x 15" d x 31" h\* ESFUL-G30D

\*Size does not include top and feet.

STEP 2 CHOOSE TOP



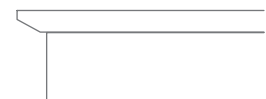
Top with Large Bevel  
EST-LB  
Adds 1" to overall height.  
Adds 1½" to overall width.



Top with 1/8" Overhang  
EST-MO  
Adds 1" to overall height.  
Adds ¼" to overall width.



Top with 3/4" Overhang  
EST-TR  
Adds 1" to overall height.  
Adds 1½" to overall width.

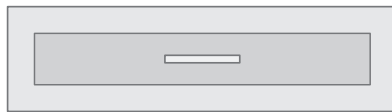


Top with Reverse Bevel  
EST-RB  
Adds 1" to overall height.  
Adds 2" to overall width.

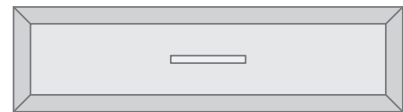
### STEP 3 CHOOSE FULL OVERLAY DRAWER FRONT



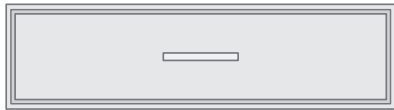
**Flat Slab**  
ESS-FS



**Flat Panel**  
ESS-FP



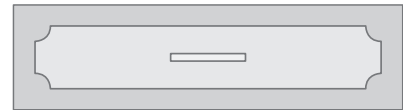
**Raised Panel**  
ESS-RP



**Beaded Edge**  
ESS-BE



**Step Panel**  
ESS-SP

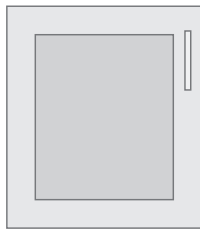


**Scalloped Panel**  
ESS-SC

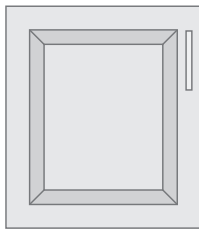
### STEP 4 CHOOSE FULL OVERLAY DOOR FRONT



**Flat Slab Door Front**  
ESR-FS



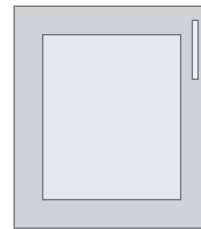
**Flat Panel Door Front**  
ESR-FP  
Glass Options Available



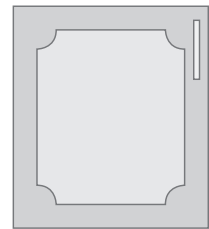
**Raised Panel Door Front**  
ESR-RP



**Beaded Edge Door Front**  
ESR-BE



**Step Panel Door Front**  
ESR-SP



**Scalloped Panel Door Front**  
ESR-SC

### STEP 5 CHOOSE LEG/BASE



**Angled Leg**  
ESFUL-L-AN, Adds 4" to overall height.



**Cutout Base**  
ESFUL-L-CO, Adds 4" to overall height.



**T-Base**  
ESFUL-L-TB, Adds 4" to overall height.

### STEP 6 CHOOSE HARDWARE

Level A hardware is standard. See the Simply Amish Features and Options book for complete selection.